

Anti-Tau Antibody



PhosphoSolutions®
Antibodies that work™

www.phosphosolutions.com
orders@phosphosolutions.com
888-442-7100

Catalog#: 1998-TAU

Size: 100 µl

Cite this antibody: PhosphoSolutions Cat# 1998-TAU, RRID:AB_2492256

Host	Applications	Species Tested	Species Assumed*	Molecular Weight
Chicken	WB 1:10,000 ICC 1:1,000 IHC 1:1,000	B, H, M, P, R		~48, 65, 75 kDa isoforms

Product Description: Chicken polyclonal antibody.

Biological Significance: Tau is a key microtubule-associated protein that plays an important role in the formation of microtubules in axons (Binder et al. 1985). Six tau isoforms have been identified as products of a single gene produced by alternative mRNA splicing (Goedert 1990). Tau mutations have been implicated in many neurodegenerative disorders such as Alzheimer's disease (AD), Pick's disease and progressive supranuclear palsy.

Antigen: Recombinant full length human tau expressed in and purified from *E. Coli*.

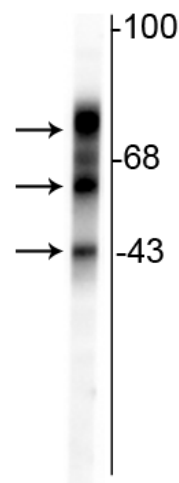
Antibody Specificity: Specific for the ~48, 65 & 75 kDa tau isoforms.

Purification Method: Total IgY fraction.

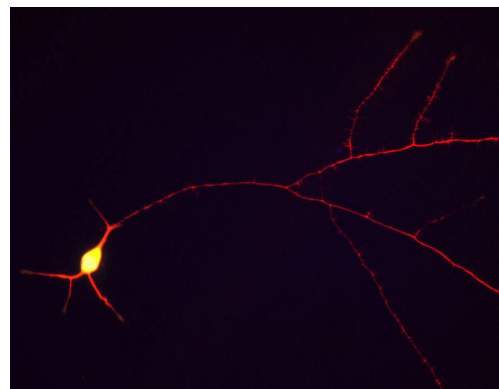
Quality Control Tests: Western blots performed on each lot.

Packaging: 100 ul liquid containing 10 mM sodium azide.

Storage and Stability: Shipped on blue ice. Recommended that the antibody be aliquoted into smaller working volumes (10-30 uL/vial depending on usage) upon arrival and stored long term at -20° C or -80° C, while keeping a working aliquot stored at 4° C for short term. Avoid freeze/thaw cycles. Stable for at least 1 year.



Western blot of rat cortical lysate showing specific immunolabeling of the ~48 kDa, ~65 kDa & ~75 kDa tau isoforms.



Immunostaining of cultured rat hippocampal neurons stained with anti-TAU antibody (red, 1:1000) along the neuronal processes.

General References:

Binder LI, Frankfurter A, Rebhun LI (1985) The distribution of tau in the mammalian central nervous system. *J Cell Bio* Oct; 101(4):1371-8.

Goedert M. and Jakes R. (1990) Expression of separate isoforms of human tau protein: correlation with the tau pattern in brain and effects on tubulin polymerization. *EMBO J* 9, 4225-4230.

Application Key: **WB** = Western Blot **IF** = Immunofluorescence **IHC** = Immunohistochemistry **IP** = Immunoprecipitation

Species Reactivity Key: **All**-All Species **A**-Avian **Amp**-Amphibian **Ar**-*Arabidopsis* **B**-Bovine **C**-Canine **Ch**-Chicken **D**-*Drosophila*
GP-Guinea Pig **H**-Human **Ha**-Hamster **M**-Mouse **NHP**- Non-human primate **P**-Pig **R**-Rat **S**-Sheep **X**-*Xenopus* **Z**-Zebrafish

*Species assumed based on 100% homology with sequence used as antigen

For Research Use Only