

Anti-GRIP1 Associated Protein 1 (GRASP1) Antibody



PhosphoSolutions®

Antibodies that work™

www.phosphosolutions.com

orders@phosphosolutions.com

888-442-7100

Catalog #: 642-GRASP

Size: 100 µl

Cite This Antibody: PhosphoSolutions Cat# 642-GRASP, RRID:AB_2492135

Host	Applications	Species Tested	Species Reactivity*	Molecular Weight
Rabbit	WB 1:1000	M, R	B, C, H	~95 kDa

Product Description: Affinity purified rabbit polyclonal antibody.

Biological Significance: PDZ domain-containing proteins, such as PSD-95 and GRIP are thought to play key roles in glutamate receptor plasticity. GRIP-associated proteins (GRASPs) that bind to distinct PDZ domains within GRIP also play key roles in regulation of glutamate receptor function. GRASP-1 is a neuronal rasGEF associated with GRIP and AMPA receptors *in vivo* (Scannevin and Huganir, 2000). Recent work suggests that GRASP-1 may regulate neuronal ras signaling and contribute to the regulation of AMPA receptor distribution by NMDA receptor activity (Ye et al., 2000).

Antigen: Peptide corresponding to amino acid residues from the C-terminal region of rat GRASP1, conjugated to keyhole limpet hemocyanin (KLH).

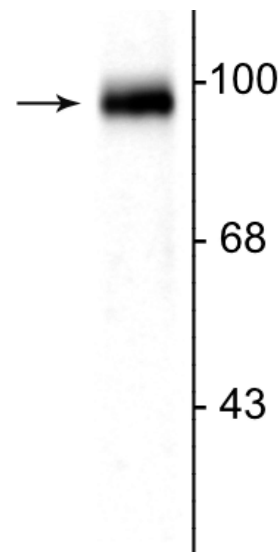
Antibody Specificity: Specific for endogenous levels of the ~95 kDa GRASP1 protein.

Purification Method: Prepared from pooled rabbit serum by affinity purification via chromatography on an affinity column made with the C-terminal peptide used as antigen.

Quality Control Tests: Western blots performed on each lot.

Packaging: 100 µl in 10 mM HEPES (pH 7.5), 150 mM NaCl, 100 µg BSA per ml and 50% glycerol.

Storage and Stability: Shipped on blue ice. Storage at -20°C is recommended, as aliquots may be taken without freeze/thawing due to presence of 50% glycerol. Stable for at least 1 year at -20°C.



Western blot of rat cerebellar lysate showing the specific immunolabeling of the ~95 kDa GRASP protein.

General References:

Scannevin RH, Huganir RL (2000) Postsynaptic organization and regulation of excitatory synapses. *Nat Rev Neurosci* 1:133-141.

Ye B, Liao DZ, Zhang XQ, Zhang PS, Dong HL, Huganir RL (2000) GRASP-1: A neuronal RasGEF associated with the AMPA receptor/GRIP complex. *Neuron* 26:603-617.

Application Key: **WB** = Western Blot **IF** = Immunofluorescence **IHC** = Immunohistochemistry **IP** = Immunoprecipitation

Species Reactivity Key: **All**-All Species **A**-Avian **Amp**-Amphibian **B**-Bovine **C**-Canine **Ch**-Chicken **D**-*Drosophila* **GP**-Guinea Pig
H-Human **Ha**-Hamster **M**-Mouse **NHP**- Non-human primate **P**-Pig **R**-Rat **Ra**-Rabbit **S**-Sheep **X**-*Xenopus* **Z**-Zebrafish

*Species assumed based on 100% homology with sequence used as antigen

For Research Use Only