



PhosphoSolutions®
Antibodies that work™

Colorado Biosciences Park
12635 East Montview Boulevard, #213
Aurora, CO 80010-7116
Tel: (888) 442-7100

Anti-Ribosomal S6 Kinase 2

Catalog Number: 1850-RSK2

Size: 100 µl

\$310.00

Product Description: Affinity purified rabbit polyclonal antibody

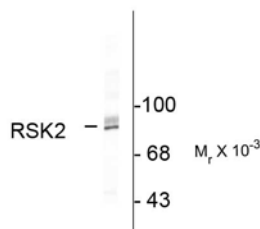
Applications: **WB:** 1:1000

Antigen: Peptide corresponding to amino acid residues from the C-terminal region of rat ribosomal S6 kinase 2, conjugated to keyhole limpet hemocyanin (KLH).

Species Reactivity: The antibody has been demonstrated to work in human tissue. It is anticipated that the antibody will work in bovine, canine, chicken, mouse and rat tissues based on the fact that these species have 100% homology with the amino acid sequence used as antigen.

Biological Significance: The p90 ribosomal S6 kinases (RSK)1–4 are downstream members of the extracellular signal-regulated kinase (ERK)/MAPK cascade. The loss of RSK2 activity in humans leads to Coffin–Lowry syndrome, which is characterized by mental retardation and growth deficits (Hanauer and Young, 2002). Recent work suggests that RSK2 exerts a tonic regulation on G-protein coupled signaling (Sheffler et al., 2006).

Anti-Ribosomal S6 Kinase 2



Western blot of HeLa lysate showing specific immunolabeling of the ~90k RSK2 protein.

Purification Method: Prepared from rabbit serum by affinity purification via chromatography on an affinity column made with the C-terminal peptide used as antigen.

Antibody Specificity: Specific for ~90k RSK2 protein.

Page 1 of 2

WB = Western Blot **IF** = Immunofluorescence **IHC** = Immunohistochemistry **IP** = Immunoprecipitation

Packaging: 100 µl in 10 mM HEPES (pH 7.5), 150 mM NaCl, 100 µg BSA per ml and 50% glycerol. Adequate amount of material to conduct 10-mini Western Blots.

Storage and Stability: Store at –20°C; stable for at least one year.

Shipment: Domestic - Blue Ice; International - Blue Ice or Dry Ice.

Quality Control Tests: Western Blots performed on each lot.

References:

Hanauer A, Young ID (2002) Coffin-Lowry syndrome: clinical and molecular features. *J Med Genet* 39:705-713.

Sheffler DJ, Kroeze WK, Garcia BG, Deutch AY, Hufeisen SJ, Leahy P, Bruning JC, Roth BL (2006) p90 ribosomal S6 kinase 2 exerts a tonic brake on G protein-coupled receptor signaling. *Proc Natl Acad Sci (USA)* 103:4717-4722.

WB = Western Blot **IF** = Immunofluorescence **IHC** = Immunohistochemistry **IP** = Immunoprecipitation

Packaging: 100 µl in 10 mM HEPES (pH 7.5), 150 mM NaCl, 100 µg BSA per ml and 50% glycerol. Adequate amount of material to conduct 10-mini Western Blots.

Storage and Stability: Store at -20°C; stable for at least one year.

Shipment: Domestic - Blue Ice; International - Blue Ice or Dry Ice.