



**PhosphoSolutions®**  
Antibodies that work™

Colorado Biosciences Park  
12635 East Montview Boulevard, #213  
Aurora, CO 80045-7337  
Tel: (888) 442-7100

## Anti-Amyloid Precursor Protein

**Catalog Number:** 144-APP

**Size:** 100 µl

**Product Description:** Affinity purified rabbit polyclonal antibody

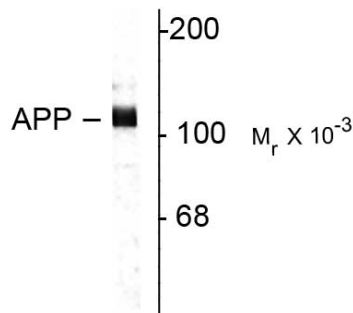
**Applications:** WB: 1:1000

**Antigen:** Peptide corresponding to amino acid residues from the C-terminal region of rat APP.

**Species reactivity:** The antibody has been directly tested for reactivity in rat tissue. It is anticipated that the antibody will also work with canine, chicken, human, mouse and non-human primate tissues based on the fact that these species have 100% homology with the amino acid sequence used as antigen.

**Biological Significance:** A large body of evidence has implicated the amyloid precursor protein (APP) in the pathogenesis of Alzheimer's disease (AD) (Kamenetz et al., 2003). The phosphorylation of APP at Thr<sup>668</sup> is thought to play a critical role in generation of the soluble APP (*beta*) and *beta*-amyloid peptide (*abeta*) which are the major components of senile plaques in patient brains inflicted with AD (Liu et al., 2003; Ando et al., 2001).

### Anti-Amyloid Precursor Protein



**Western blot** of rat hippocampal lysate showing specific immunolabeling of the ~115k APP protein.

**Purification Method:** Prepared from rabbit serum by affinity purification on a column made with the C-terminal peptide used as antigen.

Page 1 of 2

**WB** = Western Blot   **IF** = Immunofluorescence   **IHC** = Immunohistochemistry   **IP** = Immunoprecipitation

**Packaging:** 100 µl in 10 mM HEPES (pH 7.5), 150 mM NaCl, 100 µg per ml BSA and 50% glycerol. Adequate amount of material to conduct 10-mini Western Blots.

**Storage and Stability:** Store at -20°C; stable for at least one year.

**Shipment:** Domestic - Blue Ice; International - Blue Ice or Dry Ice.

**Antibody Specificity:** Specific for ~115k APP protein. Immunolabeling of the APP protein band is completely blocked by preadsorption of the antibody with the peptide used as antigen.

**Quality Control Tests:** Western blots performed on each lot.

**References:**

- Ando K, Iijima KI, Elliott JI, Kirino Y, Suzuki T (2001) Phosphorylation-dependent regulation of the interaction of amyloid precursor protein with Fe65 affects the production of *beta*-amyloid. *J Biol Chem* 276:40353-40361.
- Kamenetz F, Tomita T, Hsieh H, Seabrook G, Borchelt D, Iwatsubo T, Sisodia S, Malinow R (2003) APP processing and synaptic function. *Neuron* 37:925-937.
- Liu F, Su Y, Li B, Zhou Y, Ryder J, Gonzalez-DeWhitt P, May PC, Ni B (2003) Regulation of amyloid precursor protein (APP) phosphorylation and processing by p35/cdk5 and p25/cdk5. *FEBS Lett* 547:193-196.

**WB** = Western Blot   **IF** = Immunofluorescence   **IHC** = Immunohistochemistry   **IP** = Immunoprecipitation

**Packaging:** 100  $\mu$ l in 10 mM HEPES (pH 7.5), 150 mM NaCl, 100  $\mu$ g per ml BSA and 50% glycerol. Adequate amount of material to conduct 10-mini Western Blots.

**Storage and Stability:** Store at  $-20^{\circ}\text{C}$ ; stable for at least one year.

**Shipment:** Domestic - Blue Ice; International - Blue Ice or Dry Ice.